



Iowa Ag News – Cattle on Feed

Iowa Field Office · 210 Walnut Street Ste 833 · Des Moines IA 50309 · (515) 284-4340 · (800) 772-0825
fax (515) 284-4342 or (800) 719-1794 · www.nass.usda.gov/ia

Cooperating with the Iowa Department of Agriculture and Land Stewardship

January 25, 2013

Media Contact: Greg Thessen

Cattle on Feed

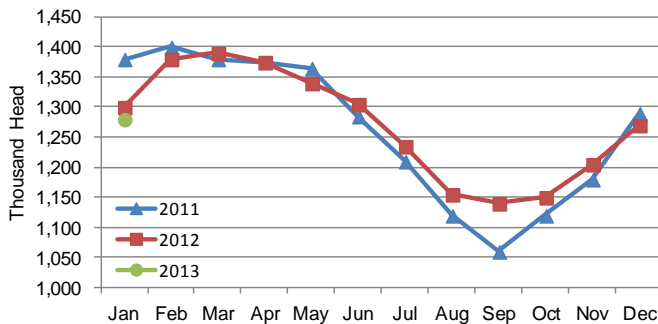
Cattle and calves on feed for slaughter market in Iowa for all feedlots totaled 1,280,000 on January 1, 2013 according to the USDA, National Agricultural Statistics Service, Iowa Field Office. The inventory is up 1 percent from December 1, 2012 but down 2 percent from January 1, 2012. Feedlots with a capacity greater than 1,000 head had 620,000 head on feed, up from last month but unchanged from last year. Feedlots with a capacity less than 1,000 head had 660,000 head on feed, unchanged from last month but down 3 percent from last year.

Placements during December totaled 162,000 head, a decrease of 38 percent from last month and down 6 percent from last year. Feedlots with a capacity greater than

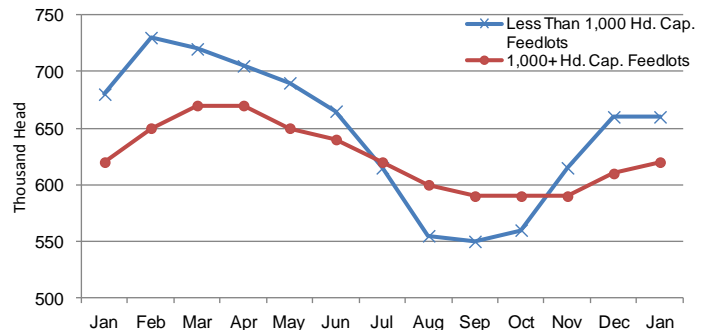
1,000 head placed 82,000 head, down 33 percent from last month but up 6 percent from last year. Feedlots with a capacity less than 1,000 head placed 80,000 head. This is down 42 percent from last month and down 16 percent from last year.

Marketings for December were 144,000 head, down 23 percent from last month and down 6 percent from last year. Feedlots with a capacity greater than 1,000 head marketed 68,000 head, down 32 percent from last month but up 8 percent from last year. Feedlots with a capacity less than 1,000 head marketed 76,000 head, down 13 percent from last month and down 16 percent from last year. Other disappearance totaled 8,000 head.

Cattle on Feed, Inventory on all Feedlots, Iowa: 2011-2012



Cattle on Feed, Inventory by Feedlot Capacity, Iowa: Past 12 Months



All Cattle on Feed, Iowa

Item	Lots 1,000+ Head	Lots Less than 1,000 Head	All Lots
	(1,000 Head)	(1,000 Head)	(1,000 Head)
Cattle on Feed, December 1, 2012	610	660	1,270
December Placements	82	80	162
December Marketings	68	76	144
December Other Disappearance	4	4	8
Cattle on Feed, January 1, 2013	620	660	1,280

Cattle on Feed: Number on Feed, Placements, Marketings, and Other Disappearance by Month, 1,000+ Capacity Feedlots

[Cattle and calves on feed are animals for slaughter market being fed a ration of grain or other concentrates and are expected to produce a carcass that will grade select or better.]

State	Cattle on Feed January 1			Placements during December			Marketings during December			December Disappearance other than Slaughter ¹		
	2012	2013	'13 as % of '12	2011	2012	'12 as % of '11	2011	2012	'12 as % of '11	2011	2012	'12 as % of '11
	(1,000 Head)	(1,000 Head)	(Percent)	(1,000 Head)	(1,000 Head)	(Percent)	(1,000 Head)	(1,000 Head)	(Percent)	(1,000 Head)	(1,000 Head)	(Percent)
Arizona	279	272	97	26	29	112	36	23	64	1	1	100
California	510	480	94	61	50	82	52	55	106	4	5	125
Colorado	1,150	1,000	87	160	140	88	160	155	97	10	5	50
Idaho	230	230	100	36	26	72	40	40	100	1	1	100
Iowa	620	620	100	77	82	106	63	68	108	4	4	100
Kansas	2,250	2,110	94	350	365	104	445	425	96	15	20	133
Nebraska	2,550	2,480	97	380	390	103	380	425	112	10	15	150
Oklahoma	375	345	92	45	52	116	52	49	94	3	3	100
South Dakota ..	260	230	88	37	34	92	37	33	89	5	1	20
Texas	2,940	2,720	93	400	415	104	420	380	90	30	15	50
Washington	232	247	106	44	25	57	45	38	84	3	1	33
Other States	465	459	99	57	56	98	46	54	117	5	3	60
United States ..	11,861	11,193	94	1,673	1,664	99	1,776	1,745	98	91	74	81

¹ Includes death loss, movement from feedlots to pasture, and shipments to other feedlots for further feeding.

Cattle on Feed: Number on Feed by Class, 1,000+ Capacity Feedlots by Quarter, State, and United States, 2012-2013

State	Steers & Steer Calves			Heifers & Heifer Calves			Cows & Bulls		
	January 1, 2012	October 1, 2012	January 1, 2013	January 1, 2012	October 1, 2012	January 1, 2013	January 1, 2012	October 1, 2012	January 1, 2013
	(1,000 Head)	(1,000 Head)	(1,000 Head)	(1,000 Head)	(1,000 Head)	(1,000 Head)	(1,000 Head)	(1,000 Head)	(1,000 Head)
Arizona	276	268	264	3	4	8	0	0	0
California	440	410	405	69	65	75	1	0	0
Colorado	745	670	620	400	325	370	5	5	10
Idaho	123	137	126	106	89	99	1	4	5
Iowa	450	415	420	170	175	200	0	0	0
Kansas	1,160	1,200	1,160	1,085	1,025	945	5	5	5
Nebraska	1,530	1,400	1,530	980	900	930	40	30	20
Oklahoma	215	225	220	160	110	125	0	0	0
South Dakota ..	131	108	113	101	75	91	28	12	26
Texas	1,730	1,690	1,720	1,209	989	999	1	1	1
Washington	150	137	147	80	74	96	2	2	4
Other States ...	331	300	322	133	136	132	1	3	5
United States ..	7,281	6,960	7,047	4,496	3,967	4,070	84	62	76

United States Cattle on Feed

Cattle and calves on feed for slaughter market in the United States for feedlots with capacity of 1,000 or more head totaled 11.2 million head on January 1, 2013. The inventory was 6 percent below January 1, 2012. The inventory included 7.05 million steers and steer calves, down 3 percent from the previous year. This group accounted for 63 percent of the total inventory. Heifers and heifer calves accounted for 4.07 million head, down 9 percent from 2012.

Placements in feedlots during December totaled 1.66 million, 1 percent below 2011. Net placements were 1.59 million head. During December, placements of cattle and calves weighing less than 600 pounds were 495,000, 600-699 pounds were 415,000, 700-799 pounds were 379,000, and 800 pounds and greater were 375,000.

Marketings of fed cattle during December totaled 1.75 million, 2 percent below 2011.

Other disappearance totaled 74,000 during December, 19 percent below 2011.